



Fax: 07 5514 0514

Mob: 0411 872 000

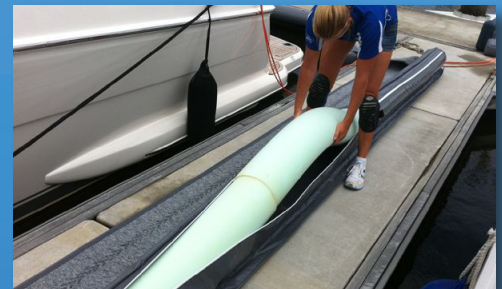
www.profender.net.au

sales@profender.net.au

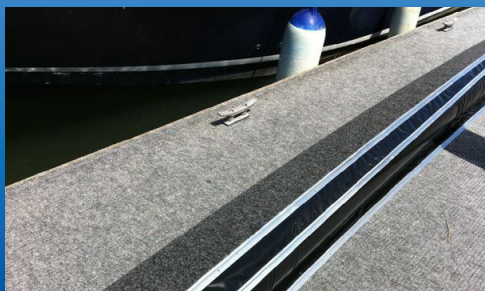
FITTING INSTRUCTIONS FOR SUPERFENDER

1. Where Fender is being fitted on a Marina Berth or Pontoon with existing rubber gunnel remove all.
2. Lay out Fender Cover and Fill with Round Foams (see photo 1) Start at one end and flex foams in so as the foams are squashed in (for example 1.1 meters of foam for every 1 meter of cover) this will prevent shrinking of the foam over any length of time.
3. Once your Super Fender has all the foams installed then slide your sail track onto your top and bottom flaps (see photo 2) if you have purchased a carpet chaffing Cover slide your sail track onto it now as well.
4. Once the track is all slid on lay your Super Fender into the water alongside the pontoon where you intend to install it (See photo 3)
5. Fit the bottom track 90mm down from the top edge of the pontoon (see photo 4)
6. Pull the top flap onto the pontoon or jetty and fix your Super Fender at the desired height (pull as high from the water as possible. (See photo 5)
7. Remember to close the end of the track to stop your Super Fender sliding (see photo 6)
8. When you have purchased a carpet chaffing cover pull it up last and fix it alongside the top track (See photo 7)

Congratulations your new Super Fender is fitted Happy Boating!



1. Super Fender with Foam



2. Super Fender with Sailtrack On



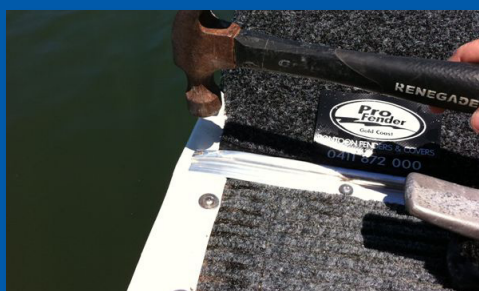
3. Super Fender laying alongside pontoon ready for fitting



4. Fitting Super Fender lower track 90mm from top



5. Fixing Top Flap of Super Fender onto Pontoon



6. Closing Ends of Sailtrack



7. Carpet Chaffing Cover on SuperFender